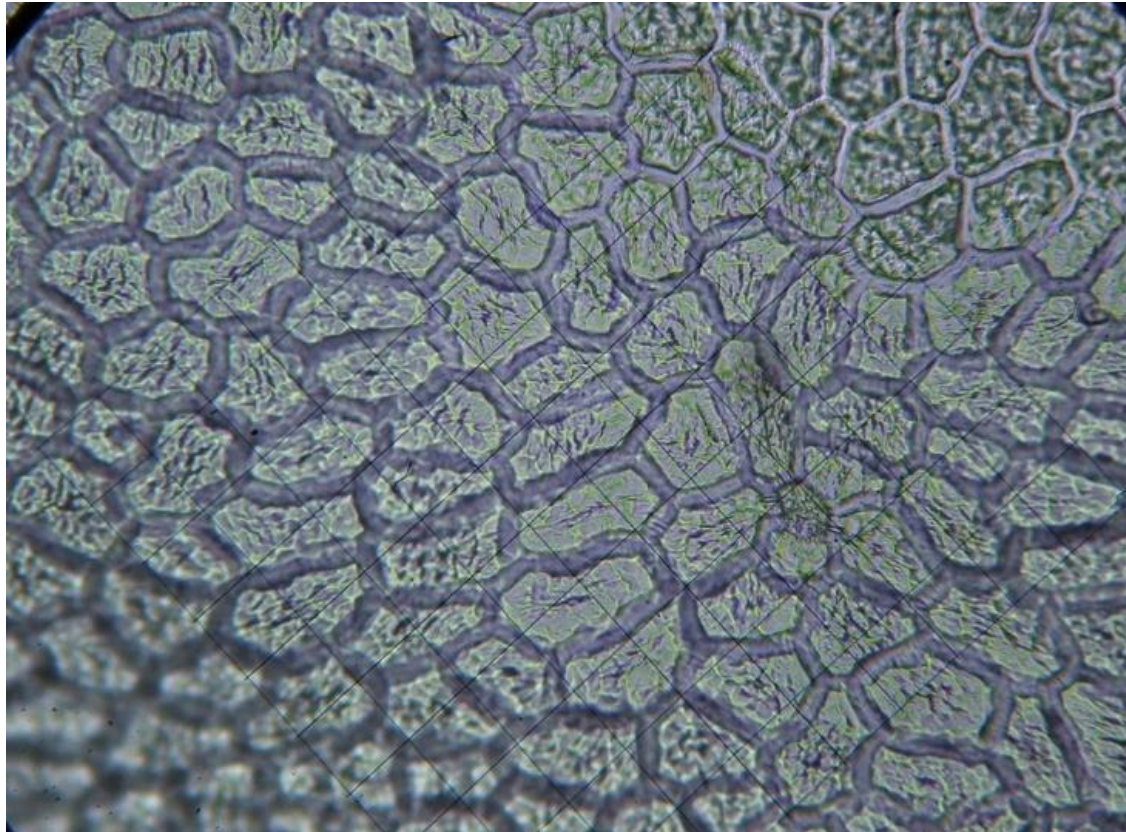


Melastomataceae: examples leaves

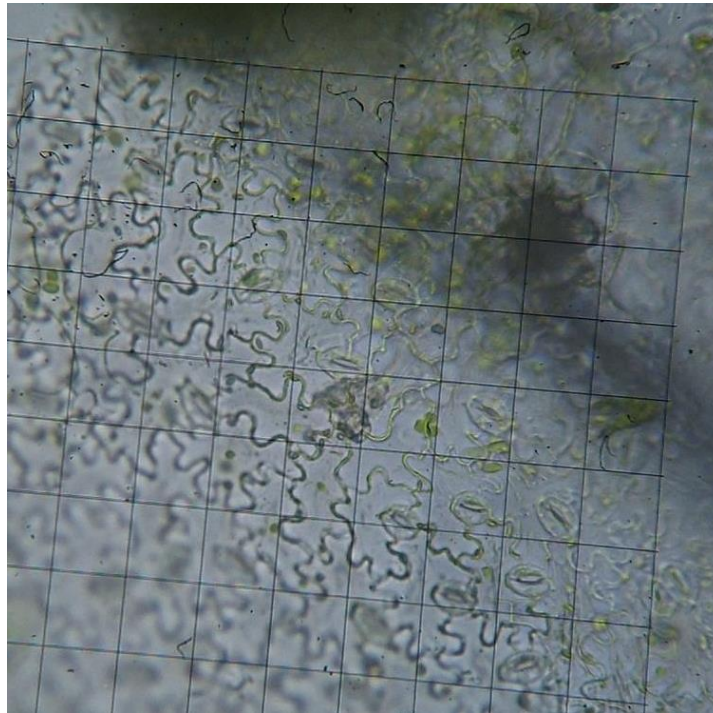
Each square of the grid in this document
represents approx. 0.0025 mm^2 .

In pictures (_400) and details x4, medium-
sized stomata would fit in one square of
the grid in the eye-piece when using a 10x
eye-piece of the microscope and
an objective lens 40x.

Warneckea yangambensis leaf adax



Warneckea yangambensis leaf abax



Warneckea yangambensis leaf abax detail x4

